

# SafePoint Base

**Boost security while reducing administration time and costs**



*Organizations around the world rely on the HPE NonStop Safeguard product as a critical means for securing HPE NonStop access. But working with SAFECOM, Safeguard's user interface, is extremely complex and time consuming, requiring administrators to log into individual machines and work with cumbersome syntax to manage security settings and policies.*

*With SafePoint, organizations can dramatically streamline Safeguard security administration, while enabling administrators to gain better control over security policies and mechanisms.*

## Purpose

SafePoint offers an intuitive, centralized interface that enables administrators to more efficiently and effectively manage Safeguard security. With SafePoint, administrators get a single solution for managing, monitoring and reporting upon multiple NonStop systems – which yields significant time and cost savings.

## Features

### Intuitive Administration

SafePoint provides an intuitive graphical user interface (GUI) for doing Safeguard security administration. SafePoint's simple on-screen controls allow users to administer, implement and manage Safeguard data security without having to learn complicated command syntax.

Through SafePoint's intuitive interface, administrators can perform virtually all administrative tasks. SafePoint's time saving features include the ability to let administrators download all of a system's security rules into an Excel spreadsheet, modify rules as needed and upload those revised rules back into the NonStop system.

### Centralized Administration of Multiple Systems

When using Safeguard, administrators must do a lot of time consuming and repetitive tasks – and this challenge is magnified in environments in which multiple NonStop systems are deployed. SafePoint significantly streamlines these efforts, offering an easy to use GUI with powerful multi-nodal capabilities. With SafePoint, security administrators can perform Safeguard transactions on any number of NonStop systems – with a few clicks of the mouse. With SafePoint, administrators can:

- Reset or add user passwords to multiple nodes.
- Synchronize objects and users on multiple nodes.
- Direct Safeguard requests to multiple systems simultaneously.

### Robust Reporting

SafePoint provides robust and intuitive reports that equip security administrators with the insights they need to understand and manage security more effectively. SafePoint's robust reporting features enable administrators to:

- Get reports on access control lists (ACLs), users, aliases, orphan ACLs, ACL-by-owner, user access and more.
- Define reports to cover distinct time periods, sets of users and objects, types of events, particular terminals and more.
- Run reports on all HPE NonStop systems from a centralized node and have data from multiple NonStop systems automatically merged into single reports.
- Schedule reports to run automatically, for instance during off-peak load hours.
- Automatically download reports into Excel worksheets.

## Key Features

- Change settings on multiple NonStop systems with a single command
- Encrypt all transmissions
- Generate reports on users, ACLs, aliases and more
- Use real-time alarms and automated response mechanisms
- Schedule reports to run automatically

# SafePoint

comforte 21 GmbH, Germany  
phone +49 (0) 611 93199-00  
sales@comforte.com

comforte, Inc., USA  
phone +1-303 256 6257  
ussales@comforte.com

comforte Asia Pte. Ltd., Singapore  
phone +65 6818 9725  
asiasales@comforte.com

comforte Pty Ltd, Australia  
phone +61 2 8197 0272  
aussales@comforte.com

[www.comforte.com](http://www.comforte.com)



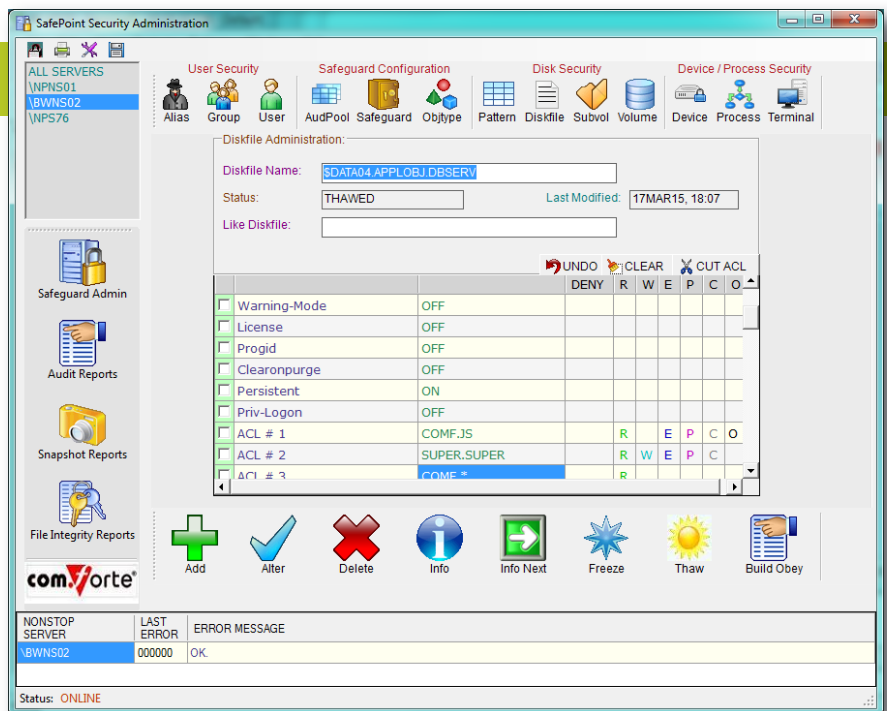
For distribution partners in your region visit comforte's homepage [www.comforte.com](http://www.comforte.com)

## Robust Security Controls

Safeguard offers a range of security controls, including authentication extensions and fine-grained access controls, auditing, and audit reporting. By making administration faster and more convenient, SafePoint enables security administrators to better optimize these security controls in their environments. In addition, security transactions performed with SafePoint are encrypted between the NonStop host and the SafePoint graphical user interface (GUI).

## Benefits

- **Reduce the time and resources allocated to security administration.** By centralizing and significantly streamlining administration, SafePoint enables one person to manage Safeguard security across all of an enterprise's NonStop systems.
- **Better use of NonStop expertise.** With SafePoint's intuitive interface, individuals – even those without NonStop experience – can manage Safeguard data security. As a result, IT organizations gain more flexibility in determining where NonStop experts focus their efforts.
- **Streamline auditing and compliance.** By offering a centralized, intuitive vehicle for auditing and reporting on all NonStop security transactions, SafePoint significantly streamlines the process of preparing for and undertaking auditing and compliance initiatives.
- **Improve security.** With capabilities for synchronizing security policies across all HPE NonStop systems, providing encrypted security transactions, and much more, SafePoint enables organizations to strengthen their overall security posture.



SafePoint provides an intuitive graphical user interface (GUI) for doing Safeguard security administration – without having to learn Safeguard's complicated command syntax. Through this interface, administrators can add users, reset user passwords across multiple nodes, schedule automated reports and much more.